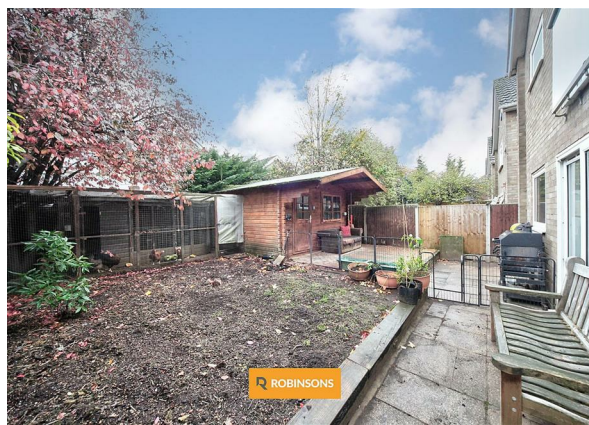
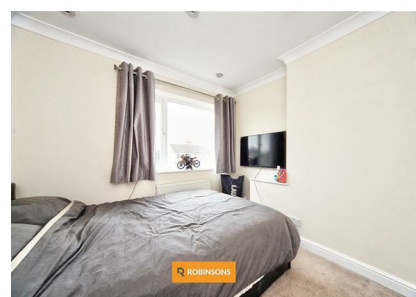
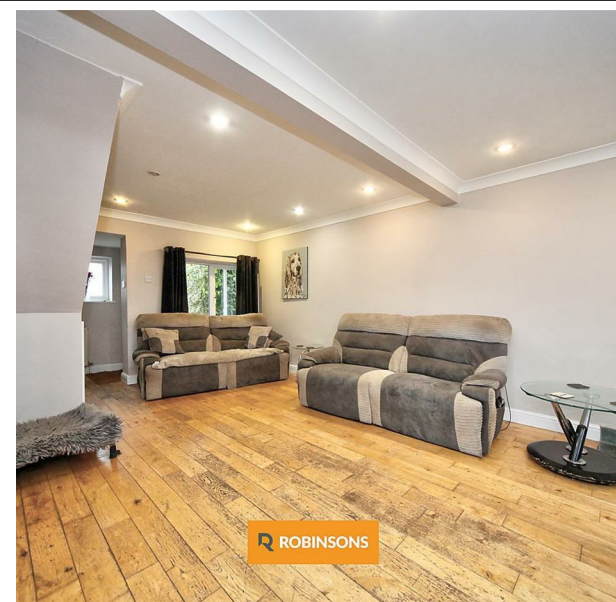
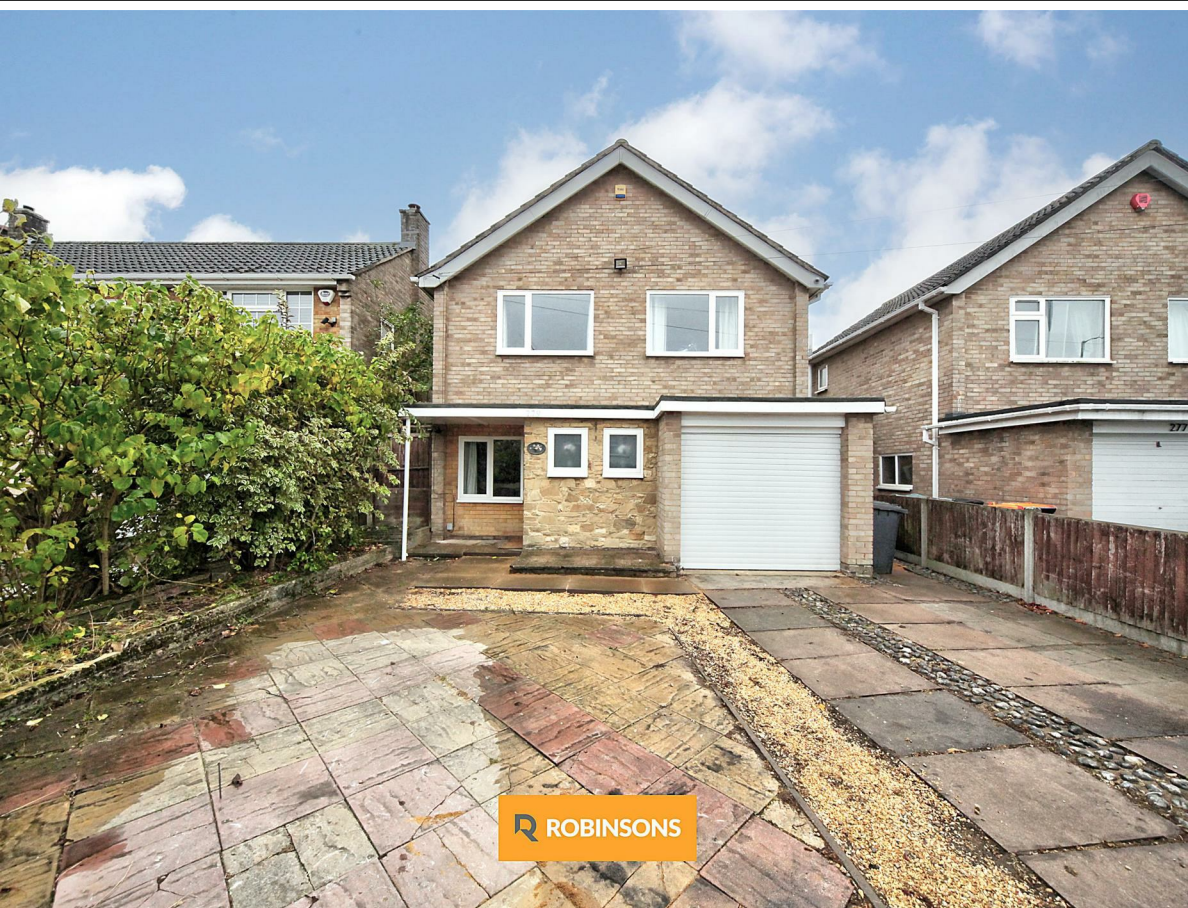


279 Luton Road, Dunstable, Bedfordshire, LU5 4LR  
£445,000

**ROBINSONS**





A THREE BEDROOM LINK-DETACHED FAMILY HOME LOCATED ON THE LUTON AND DUNSTABLE BORDERS OFFERING EXCELLENT TRANSPORT LINKS, GARAGE AND OFF-ROAD PARKING FOR SEVERAL VEHICLES.

This beautifully maintained family home features a stylish open-plan kitchen and dining area, ground floor W/C and separate utility room, and modern spotlight lighting throughout. The spacious master bedroom boasts an en-suite shower room and Juliet balcony. There are two further double bedrooms and a family bathroom.

Externally, the property offers a low-maintenance rear garden with summer house, along with a garage and driveway providing ample parking. Ideally positioned for access to the M1 motorway, Luton & Dunstable Hospital, and Dunstable Town Centre, this home perfectly combines comfort, style, and convenience.



Total Area: 100.6 m² ... 1083 ft²

Floorplan produced by Woodside Photography  
Floorplan is for illustration purposes only and all measurements are approximate



20 West Street  
Dunstable  
Bedfordshire  
LU6 1SX  
01582 661112  
sales@robinsons-estates.co.uk  
<https://www.robinsons-estates.co.uk>

